

Topic : Functions

The function f is defined by

$$f: x \rightarrow \frac{3-2x}{x-5} \quad x \in \mathbb{R}, x \neq 5$$

(a) Find $f^{-1}(x)$.

(3)

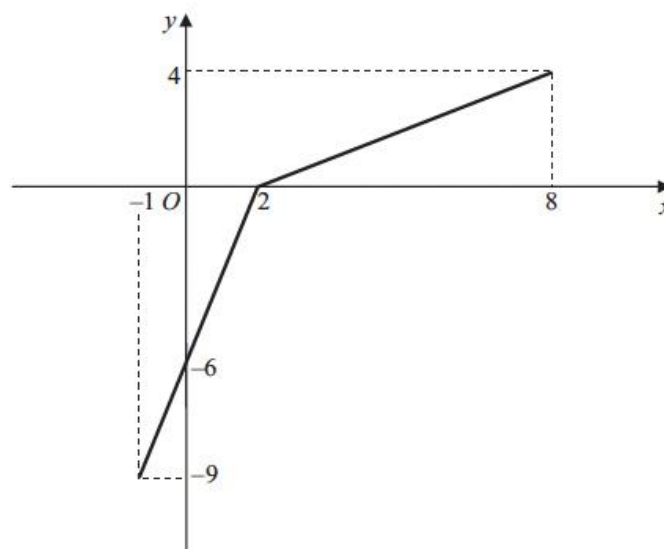


Figure 2

The function g has domain $-1 \leq x \leq 8$, and is linear from $(-1, -9)$ to $(2, 0)$ and from $(2, 0)$ to $(8, 4)$. Figure 2 shows a sketch of the graph of $y = g(x)$.

(b) Write down the range of g .

(1)

(c) Find $gg(2)$.

(2)

(d) Find $fg(8)$.

(2)

(e) On separate diagrams, sketch the graph with equation

- (i) $y = |g(x)|$,
- (ii) $y = g^{-1}(x)$.

Show on each sketch the coordinates of each point at which the graph meets or cuts the axes.

(4)

(f) State the domain of the inverse function g^{-1} .

(1)

(Total 13 marks)